

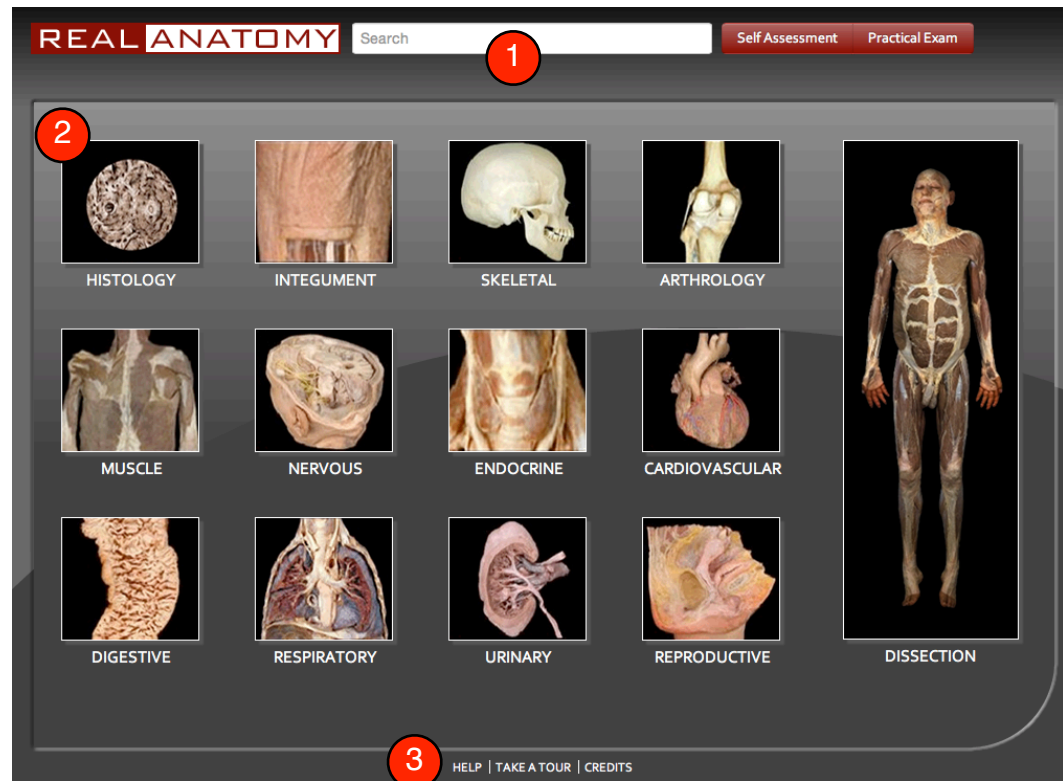
Help Manual

Contents

Home Screen	1
Main Screen	2
Related Images	4
Self Assessment/ Practical Exam Set-Up	5
Self Assessment	6
Practical Exam	8
Tablet Tips	10

Home Screen

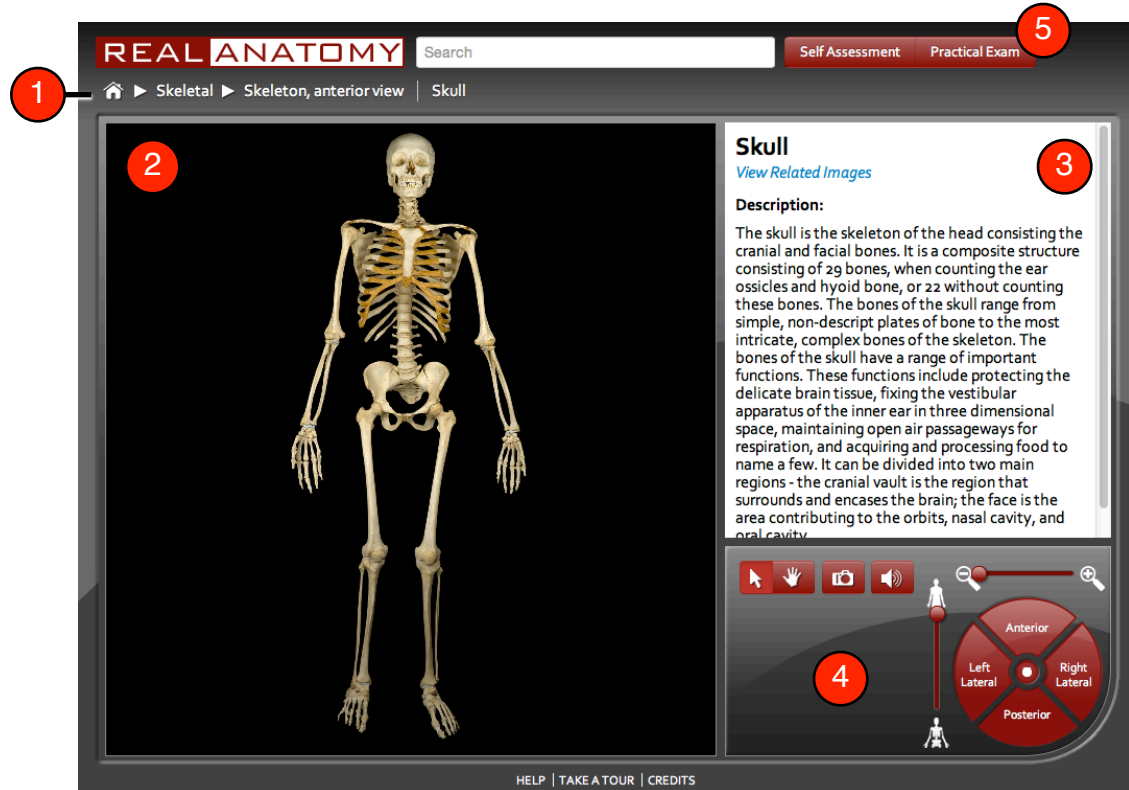
From the home screen you can select a system to study or search for a particular structure by typing in the search field.



- 1) **Search** - Type any structure name in the search box to jump to that image.
- 2) **Systems** - Click on any of the 11 body systems, histology or the dissection icon to navigate to that section of the program. From there, you can highlight structures for exploration and view related images.
- 3) **Help/Take a tour/Credits** - These links can be found anywhere within the program.

Main Screen

This is the primary interface of Real Anatomy. From here, you dissect through layers of a real cadaver, view and manipulate images, study descriptions, hear pronunciations, and quiz yourself on what you have learned.



- 1) **Breadcrumb Trail** - This will provide you with an image path and structure name. It is displayed as follows:

Home > System > Image Name > Active Structure Name

Hovering over System drops down a list of other systems to choose from, while hovering over Image Name provides you with a list of structures found in that image.

- 2) **Viewer Window** - This is where all images are displayed. You can pan, zoom and highlight within this window to focus on structures in depth. When a selected structure is too small or outside of the viewing area, you may need to zoom in or pan the structure inside the viewer window in order for the highlight to be enabled.

- 3) **Text Description Window** - This window provides a title and description of the active structure and includes a “View Related Images” link. Active structures are highlighted in color, while the non-active structures are grayscale.

View Related Images **View Related Images** - This link inside the text description window can be used to browse additional images containing the active structure.

- 4) **Dashboard Controls** - This is a dashboard of buttons and features to view and manipulate images. From here, you can zoom, pan, dissect, and rotate the current image.



Select/Pan - Toggle between these buttons to choose whether you want to pan the image or select and highlight structures on the image.



Camera - You can save the active image in the viewer window to your browser’s downloads by clicking this button and renaming the image.



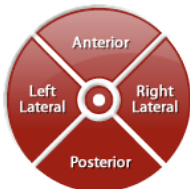
Audio - Listen to an audio pronunciation of the currently selected structure. *Adobe Flash is required for audio playback on desktop computers.



Dissect - Drag the slider up and down to cut through multiple layers of the body.



Zoom - Zoom in and out of the active image.

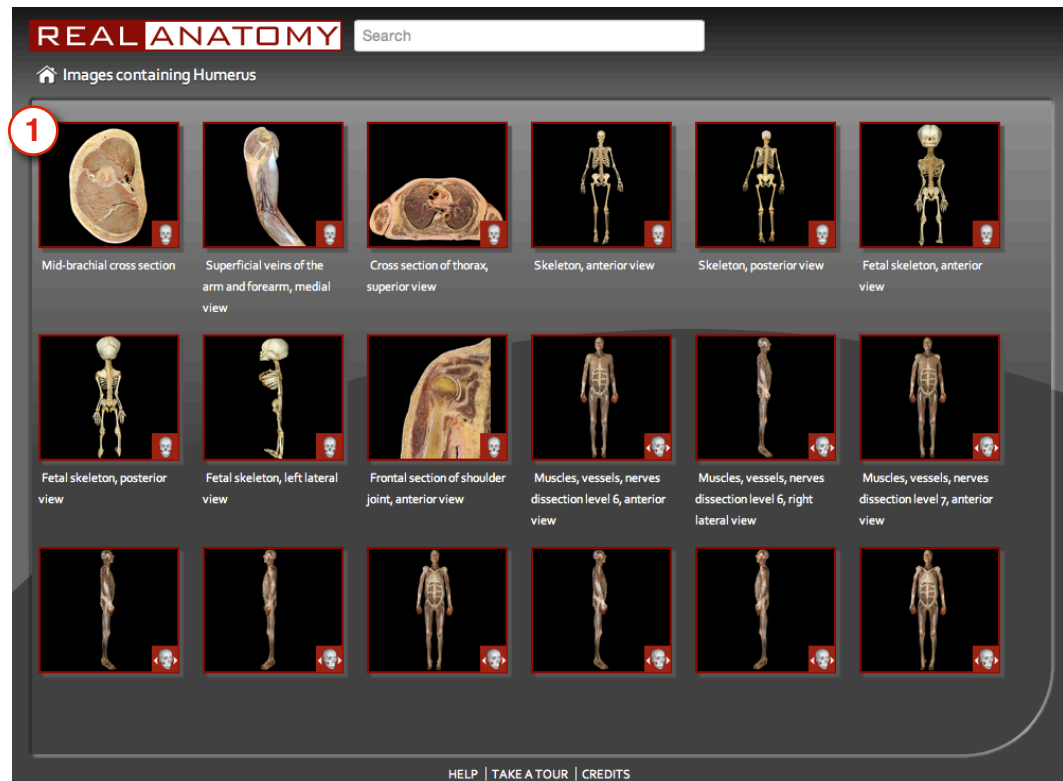


Rotation/ Microscopic Zoom - On select images, you can rotate the structure to anterior, posterior, left lateral, and right lateral views. Hitting the center button resets the view to default. When viewing Histology images, these controls change to zoom levels for viewing microscopic images.

- 5) **Self Assessment/ Practical Exam** - Click one of these options to test your knowledge. Self Assessment lets you think about your answer and mark whether it’s correct or incorrect while Practical Exam asks you to type in your answer and records your progress as you go. ([see Self Assessment/ Practical Exam Set-Up](#))

Related Images

Access a library of images that contain the current structure by clicking on the Related Images link on the main screen.



- 1) **Thumbnails** - Click on a thumbnail to launch that image in the main screen viewer window. There is also a small icon on the bottom right of each thumbnail to tell you what functionality that image has.



Still Image - Cannot be rotated or dissected.



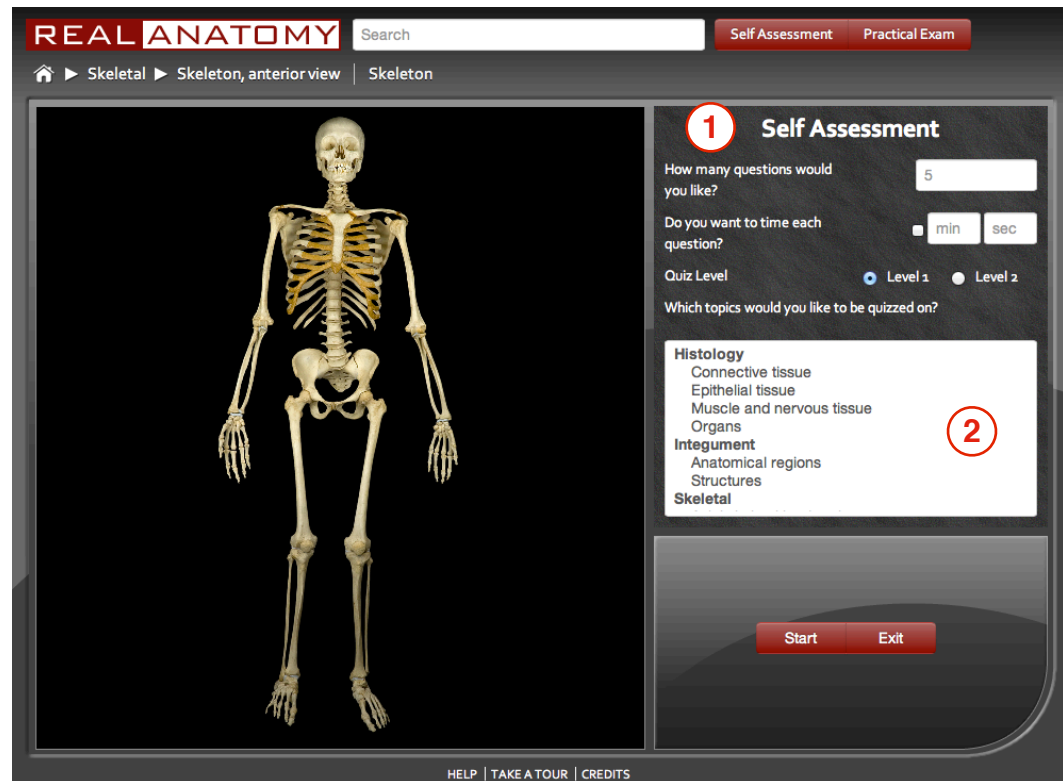
Rotation Image - The image appears in 3D and the rotate function is enabled. The brain, heart and larynx can be rotated.



Microscopic Image - Zoom in to image at 100x, 200x, 400x, or 640x magnification.

Self Assessment/ Practical Exam Set-Up

Quiz your knowledge of anatomical structures by choosing Self Assessment or Practical Exam. The setup for both is identical.



- 1) **Quiz Set Up** - From here, you can choose how many questions you'd like to be quizzed on, if you would like your answers to be timed, and what level you'd like to be tested.

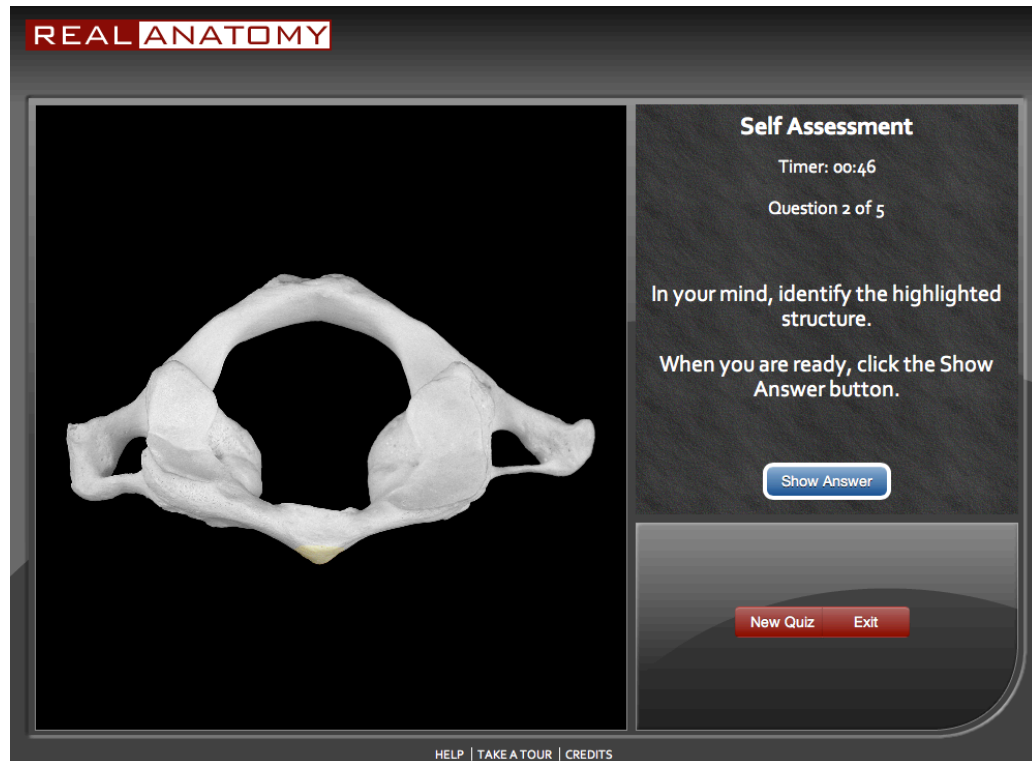
Level 1 - Provides basic anatomical structures for quizzing

Level 2 - Provides all anatomical structures in the program for quizzing

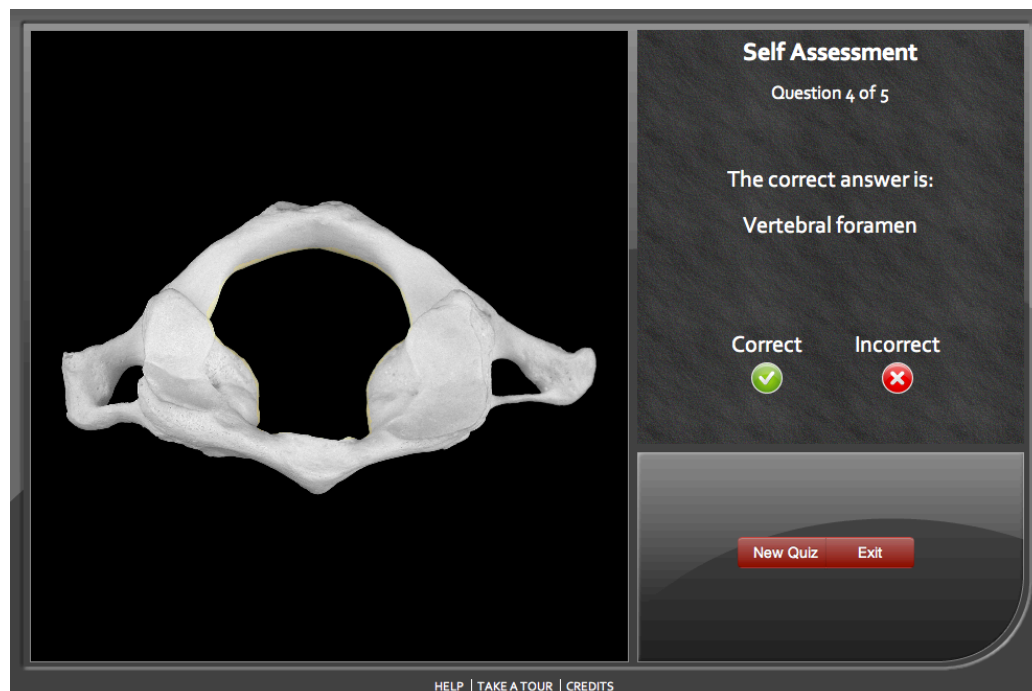
- 2) **Region Selection** - Select the regions you'd like to be quizzed on. Clicking on the same region again deselects that structure. You can choose as many regions as you like.

Self Assessment

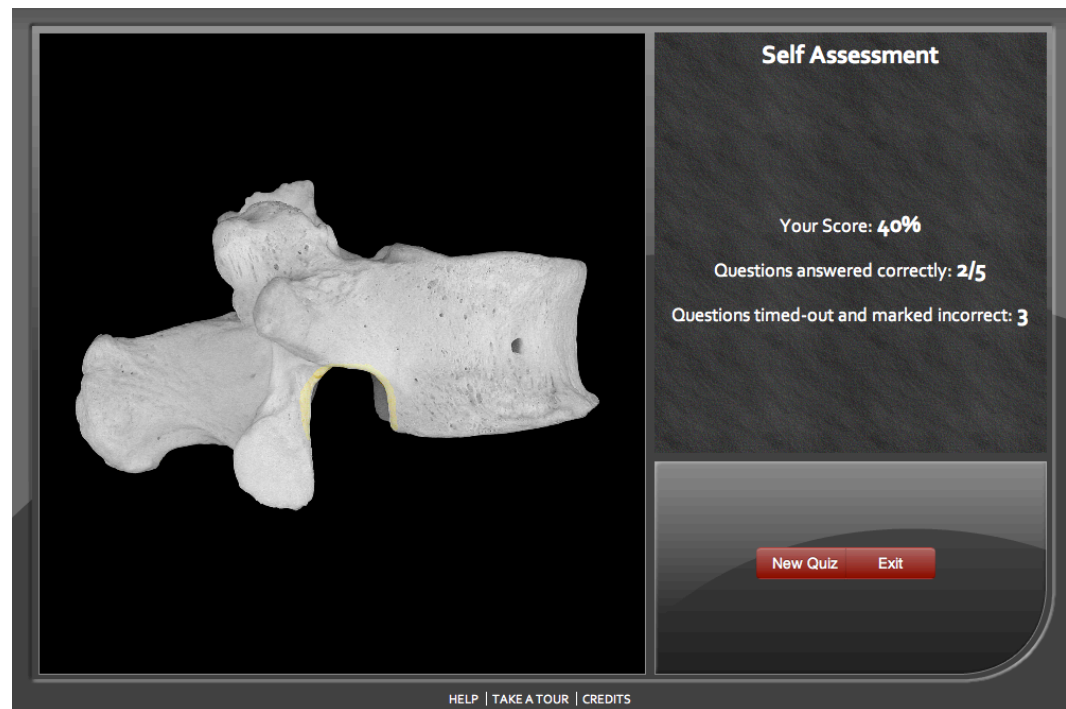
In Self Assessment, you are asked to identify the highlighted structure in the Image in your mind. Once you think you know the answer, click Show Answer.



Compare your answer with the answer shown. Mark your answer correct, or incorrect.

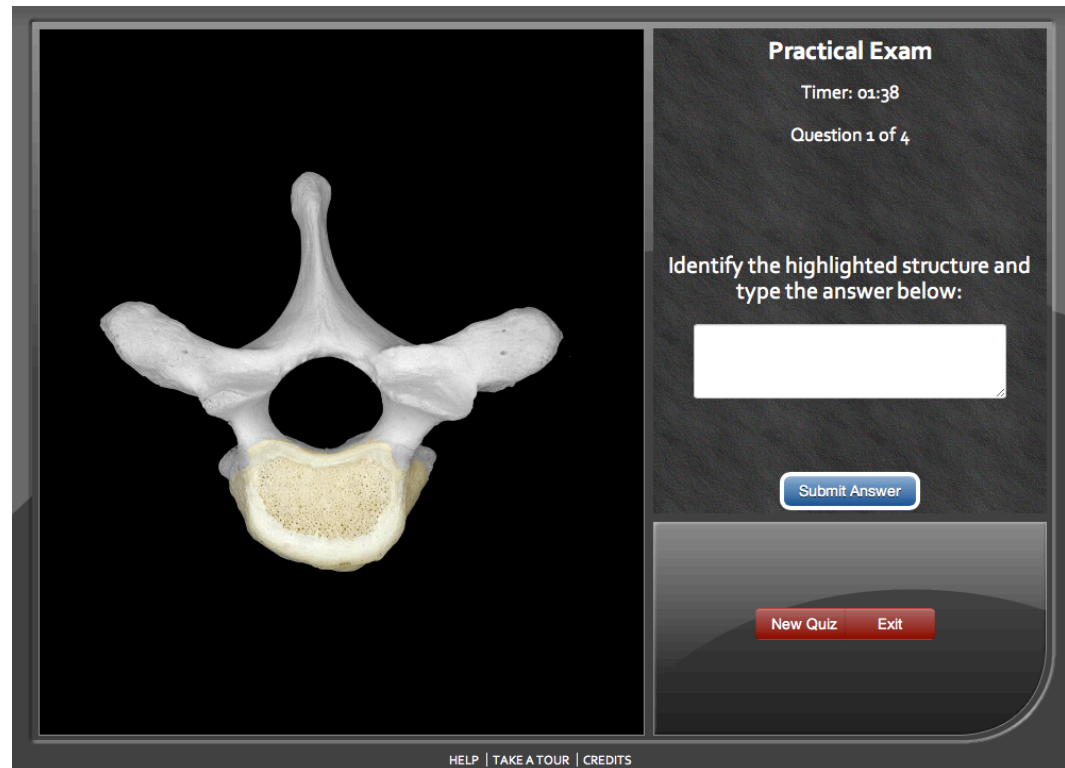


Once assessment is complete, you are provided with your score along with the number of correct answers and the number of answers that you timed out on.

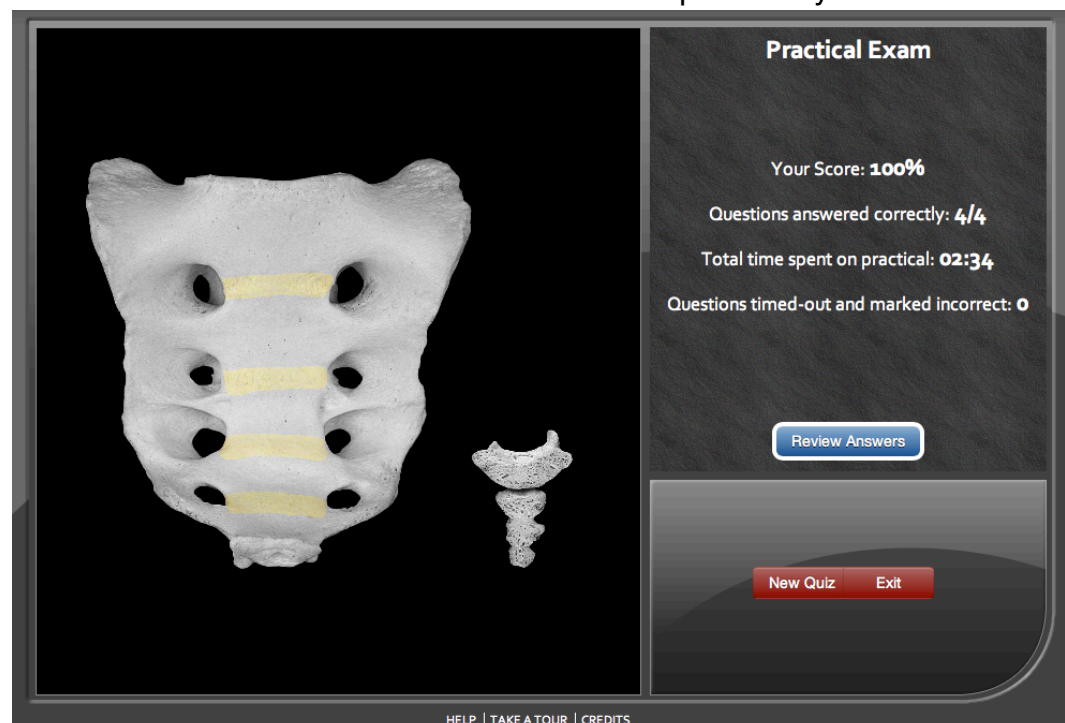


Practical Exam

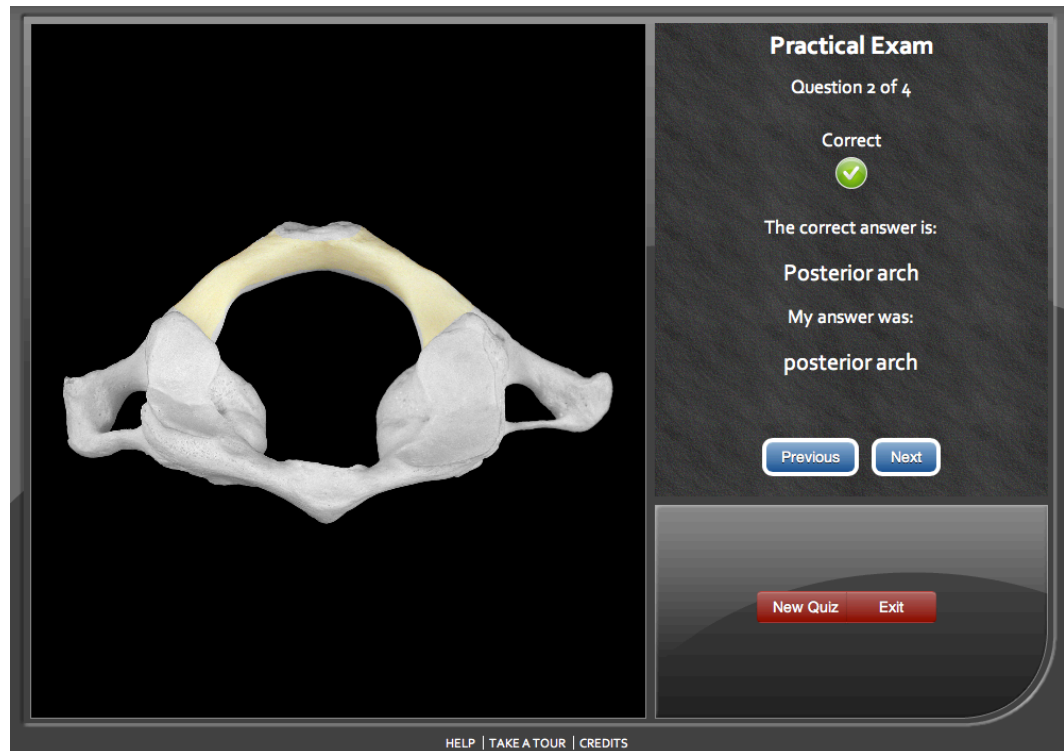
In a Practical Exam, you are asked to type in the answer and click the Submit button. Answer each of the questions until the exam is complete.



Once the exam is complete, you will be provided with a score as well as the number of correct answers and number of questions you timed out on.



After reviewing your score, you can click Review Answers to compare each of your answers with the correct answer. After reviewing your answers, you can choose to Exit out of the quizzing mode or start a New Quiz.



Tablet Tips

- 1) **Viewing & Navigating Images** - Image viewing and manipulation work with native tablet gesture functions.



Zooming - Pinch or spread two fingers in the viewer window to zoom in and out of the image.



Panning - Drag one finger in the viewer window to pan the image to your desired location.



Structure Selection - Tap on the structure in the image to highlight the structure and update the structure description.

- 2) **Saving Current Image** - Tapping the camera button opens this image in a new tab in your mobile browser. From here you can use your tablets default options to either save the image to the camera roll or copy the image in your clipboard.

